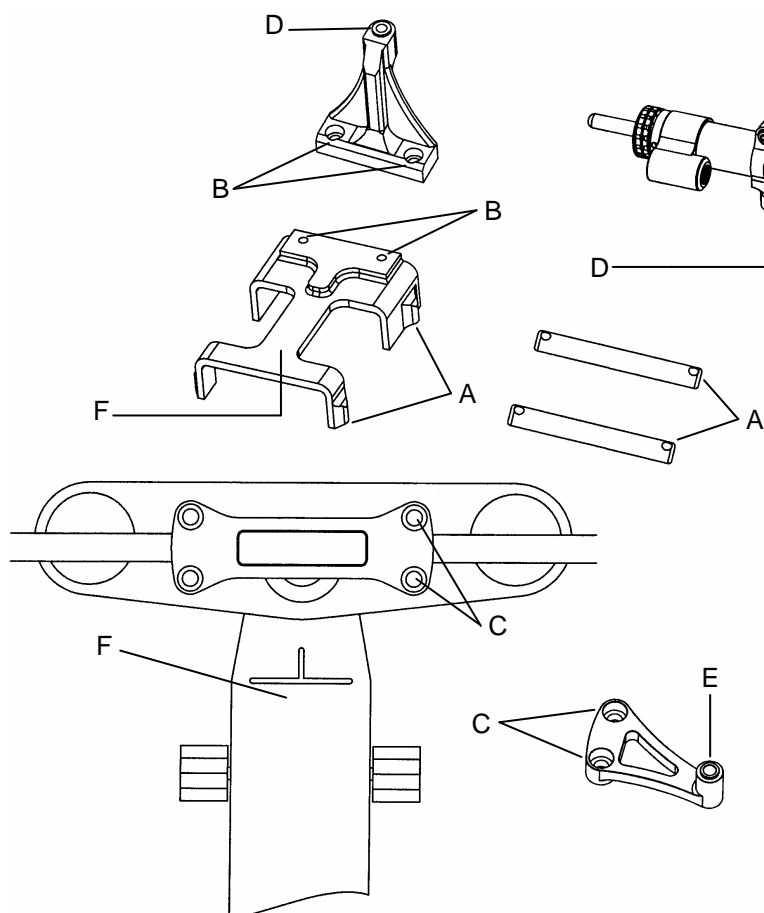


HONDA HORNET 600



F- Install support "F" to the frame placing the groove below the support over the weld of the frame.

A- Screw bolt M6x55

B- Screw M6x16

C- Screw M8x45

D- Screw M6x20
Place included anti-vibration rubber ring between point "D-D".

E- Screw M6x20
Place included anti-vibration rubber ring between point "E-E".

TORQUE LOAD

M5 = 6 N.m

M6 = 10 N.m

M8 = 22 N.m

CAUTION

Make sure that the bracket position on body steering damper will allow full steer in both directions.

The screws holding the bracket must be properly tightened (**Torque Load 4 N.m.**) to avoid slipping.

It is advisable to use high-strength thread locker on the two screws holding the damper to the support.

Initiate the use of the steering damper by selecting the slowest brake position to allow the familiarization of the functioning of the system.

⚠ Traces of oil on the rod, even after a period of use, are normal as this is a result of slow release of lubricating fluid (gel) inserted internally to provide a continuous lubrication of the rod.

⚠ It might be possible to hear a rustling and/or a gurgling noise inside the steering damper caused by the fluid being forced through the valve. This does not alter or in anyway compromise the proper functioning of the damper

The company declines any liabilities for damage caused by improper assembly, usage of components different from the ones included or modifications made to the damper and/or its components.