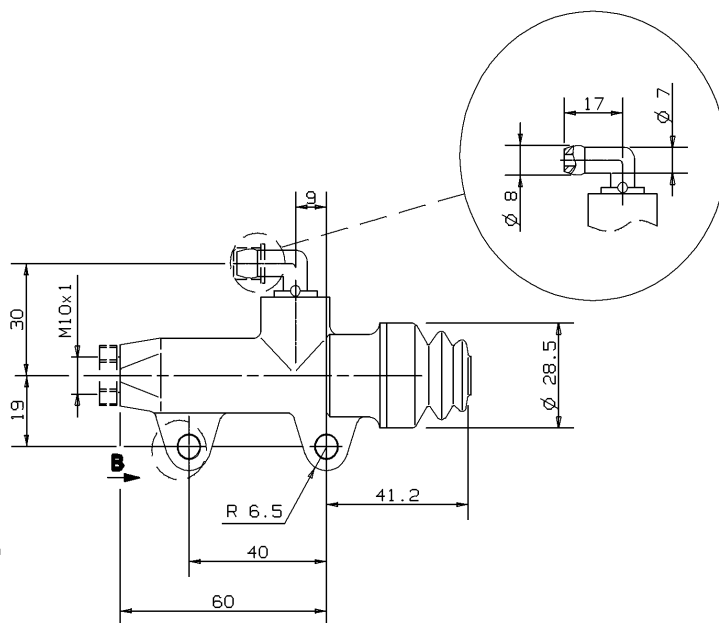


Cutaway view
of clamp detail
from B view.



DESCRIPTION

Rear master cylinder without push rod.
Construction Material: Aluminium Alloy.
Operating fluid: brake fluid DOT4.
Pipe fitting can be oriented
in the desired position.

Master cylinder
BODY color:

Black Anodic
Oxidation.

TECHNICAL CHARACTERISTICS

Piston diameter: 13.0 mm
Piston and push rod clearance
with assembled master cylinder: 1.0 mm
Weight: 0.084 Kg

AVAILABLE SPARE PARTS

CODE	SPARE PARTS	
	PIPE FITTING	BOOT
10.4776.60	210.3127.20	210.3741.20