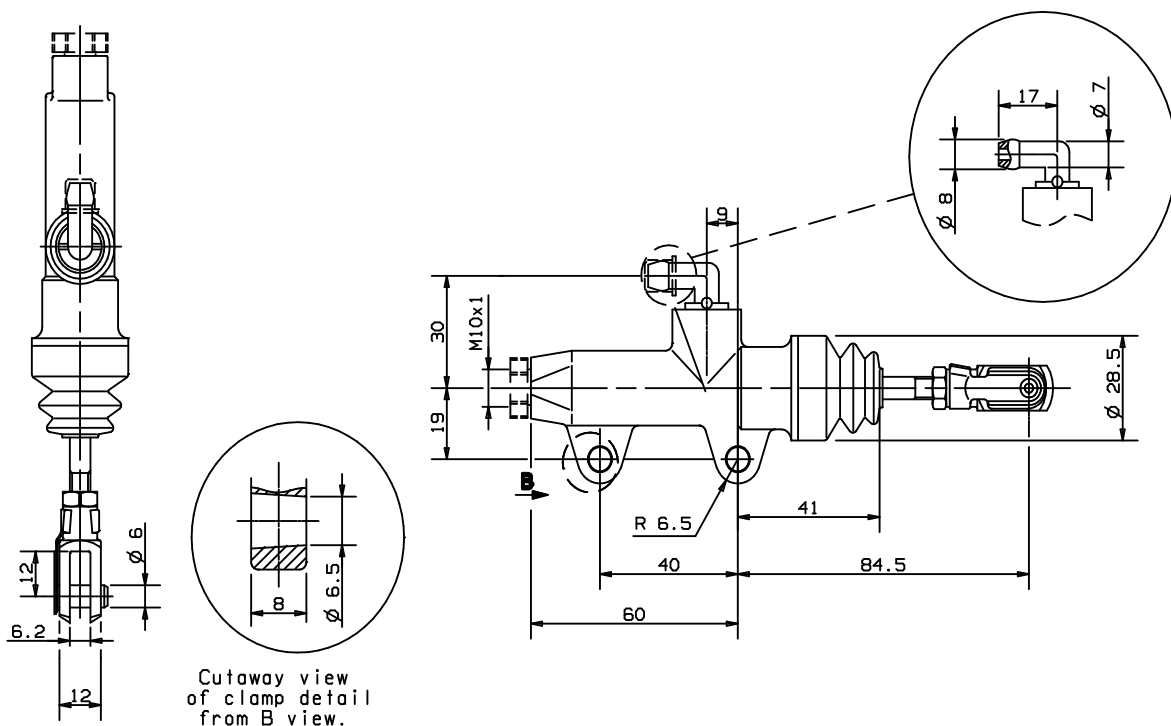




REAR MASTER CYLINDER

PS 13 C
10.4776.83



Cutaway view of clamp detail from B view.

DESCRIPTION

Rear master cylinder with push rod.
Construction Material: Aluminium Alloy.
Operating fluid: brake fluid DOT4.
Pipe fitting can be oriented in the desired position.

Master cylinder BODY color: Black Anodic Oxidation.
Master cylinder FORK protection: Dacromet (Aluminium color).

TECHNICAL CHARACTERISTICS

Piston diameter: 13.0 mm
Piston and push rod clearance with assembled master cylinder: 1.0 mm
Weight: 0.120 Kg
Maximum piston stroke: 8.6 mm

AVAILABLE SPARE PARTS

SPARE PARTS CODE	PIPE FITTING	BOOT	PUSH ROD
10.4776.83	210.3127.20	210.3741.20	110.4266.54